

# LITTLE MONSTAR

## LITTLE MONSTAR STEP LADDERS

**150 KG**



- 150kg Load Rating
- Lightweight, Manoeuvrable and easy to use
- Rear Roller Castors for ease of movement
- Heavy duty tread for added safety on all steps
- Strong Safety Bracket including recess for storing tools and bucket hooks
- Light, strong, aluminium construction
- Rear Roller Castors for ease of movement
- Heavy duty tread for added safety on all steps
- Strong Safety Bracket with recess for storing tools and bucket hooks
- Strong aluminium construction



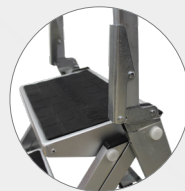
Safety Step



Foldaway Design



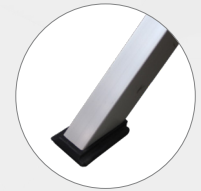
Rear Roller



Heavy Duty



Built-in Tray



Rubber Feet

### Designed for safe, easy and efficient use for a wide range of applications

**Little Monstar Step Ladders** provide extra wide and deep treads, without sharp corners or edges. Non-slip rubber tread. Large corrugated plastic foot pads ensure stability and protect flooring. Standard with two practical nylon castor wheels. Folding safety bracket provides a secure hold - includes plenty of space to hold tools, and also has a bucket hook on each side. Safety bracket height is 475mm on all models.

| Model  | Steps | Top Step Height (mm) | Safety Bracket Height (mm) | Footprint Size (mm) | Weight (kg) | Packed Size (mm) |
|--------|-------|----------------------|----------------------------|---------------------|-------------|------------------|
| MONLM2 | 2     | 480                  | 475                        | 620 x 530           | 6           | 900 x 550 x 150  |
| MONLM3 | 3     | 680                  | 475                        | 900 x 550           | 8           | 1200 x 580 x 150 |
| MONLM4 | 4     | 910                  | 475                        | 1180 x 550          | 9           | 1500 x 580 x 150 |